



33175 Ann Arbor Trail
Westland, MI 48185

Located on Hines Drive
Just east of Ann Arbor Trail

For more information call
734-261-1990
www.waynecountyparks.org

WAYNE COUNTY PARKS



Nankin Mills Interpretive Center

Home School Program Series 2012

Nankin Mills Interpretive Center is pleased to offer our series of monthly educational programs designed for home school students and their parent to attend together. Many of our popular program topics are returning, and we have added many new topics as well. See program dates and topics below. **PLEASE NOTE PROGRAM FEE CHANGES.**

- **PROGRAMS ARE HELD 1:30 – 3:00 PM at Nankin Mills unless another time is indicated.**
- **PROGRAM FEE: \$6.00 per student for each program, \$2.00 per adult.**
- **An adult is required to stay with each family group.**
- **OUT OF WAYNE COUNTY RESIDENTS: \$7.00 per student, \$3.00 per adult.**
- **Pre-registration and prepayment are required.** Register only for the topics you are interested in attending. You will not be registered for a program until payment is received at the Park Office at the above address.
- **We accept cash, credit card or check made payable to “Wayne County Parks”.**
- **PROGRAM REGISTRATION OPENS WEDNESDAY, DECEMBER 14, 2011.**
- You can mail in your registration, call in with a credit card or pay at the Park Office.
- **SORRY, NO REFUNDS** or program credits will be given unless Wayne County cancels a program.
- **Call 734-261-1990** if you have any questions.

PLEASE FOLLOW THE AGE RECOMMENDATIONS LISTED WHEN REGISTERING FOR THE ENJOYMENT OF ALL PARTICIPANTS.

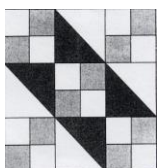
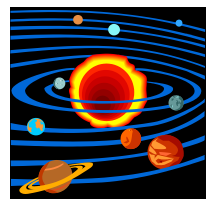
2012 Home School Program Schedule

WEDNESDAY, JANUARY 18: SNOW ~~NEW~~ SNAKES

Learn about this historic Native American game by decorating your own snow snake and then taking it outdoors to race in the snow! Great fun! Half indoors and half outdoors, dress for the weather. Ages 6 – 12.

THURSDAY, JANUARY 26: ASTRONOMY: OUR SOLAR SYSTEM

Locating winter constellations and learning about the planets and moons in our own solar system will be the focus of this astronomical adventure! A constellation craft will also be part of the fun. Please bring a T-shirt for craft. Indoor program. Ages 7 – 12.



TUESDAY, FEBRUARY 7: UNDERGROUND RAILROAD HISTORY

The Middle Rouge River was followed as a route on the Underground Railroad to reach the Detroit River crossing to Canada by people seeking freedom from slavery. Learn about our local abolitionists and stations on the Underground Railroad. Discover the secret codes used to communicate, and make your own “quilt” code. Indoor program, Ages 8 – 15.



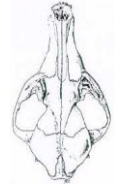
WEDNESDAY, FEBRUARY 15: MINING AND PASTIES

NEW!!

Michigan has a rich mining history. Miners were often of Scandinavian heritage and brought many of their customs to America with them. One such custom was to eat a pasty for lunch. These delicious meat, vegetable and potato creations were easy to eat with your hands down in the mine, where tables and silverware were not available! Learn about Michigan's mining past, make a miner's helmet and taste the miner's fare! Indoor program, Ages 7 – 15.

THURSDAY, FEBRUARY 23: ANIMAL KEYING: SKINS, TRACKS AND SKULLS

Michigan mammals will be highlighted as students look for clues to key out and identify their fur, tracks and skulls. Bring your observation and detective skills to solve the mysteries in this hands-on activity. Indoor program, Ages 9 – 15.



TUESDAY, MARCH 6: MICHIGAN'S LOGGING HISTORY

NEW!!

Explore a time when Michigan led the nation in lumber production. Hear some Paul Bunyan stories, become a sawyer and make a Michigan double bit axe. Half indoors and half outdoors. Ages 7 - 12.



WEDNESDAY, MARCH 14: MAPLE SUGARING AT CASS BENTON

March is maple sugaring month in Michigan. Bundle up and join our naturalist at Cass Benton Park in Northville, off Northville Road north of Six Mile, near the picnic shelter and play structure. See how trees are tapped and sap is boiled to syrup and sugar. Also learn how the early Native Americans first discovered maple sap and prepared it. Be sure to dress for the weather, program is outdoors. Ages 4 - 15.

THURSDAY, MARCH 22: NATURE JEOPARDY, NATURE CONCENTRATION AND HISTORY SCAVENGER HUNT

NEW!!

Test your "nature knowledge" with our fun trivia game. Test your memory with a game of Nature Concentration, and search for clues to Michigan's history throughout our Museum! A fun-filled afternoon of games will show you what you already know and help you learn some new things! Indoor program, Ages 8 – 15.



TUESDAY, APRIL 10: MICHIGAN HISTORY IN SONGS & STORIES, 1:30 - 2:30 pm

NEW!!



Singer and storyteller Kitty Donohue will join us to share her enjoyable folk music and stories about Michigan. She has performed for many audiences and produced several CDs. You are sure to be delighted by her wonderful talents! Indoor program, All ages welcome.

WEDNESDAY, APRIL 18: LIVE REPTILES AND AMPHIBIANS OF MICHIGAN

Frogs, turtles and snakes! Michigan is home to many species of these amazing creatures! Meet our live animals and learn about their fascinating natural history and adaptations that help them to survive in their wetland habitats. Indoor program, Ages 4 – 15.



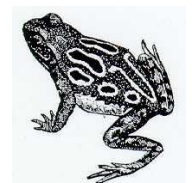
THURSDAY, APRIL 26: OWLS OF MICHIGAN

The many unique adaptations of owls make them very effective nocturnal predators. Our owl mounts will introduce you to some of the eleven different species that have been found in Michigan. Close examination of owl pellets allows you to investigate what owls have been eating! Indoor program, Ages 8 – 15.

TUESDAY, MAY 8: AN EVENING WITH FROGS! 6:30 - 8:00 pm

NEW!!

Learn about the many different species of Michigan frogs and toads and venture out on a night hike to listen to their melodious calls! The pond at Nankin Mills will be the first stop, and then we will carpool to another location a few miles away in Holliday Nature Preserve to enjoy the spring symphony of frog romance! Mostly outdoors, Ages 7 – 15.





WEDNESDAY, MAY 16: POND LIFE

You'll be amazed to see how much aquatic life lives in our little pond! Catch some of these pond critters and learn to identify them. We'll take an even closer look under our video-microscope, also known as "slime TV"! Indoors and outdoors, Ages 5 - 10.

THURSDAY, MAY 24: WILDFLOWER FOLKLORE HIKE **NEW!!**

We will visit the Cowan Section of Holliday Nature Preserve, off of Central City Parkway for an enjoyable hike to view the glorious display of wildflowers. Learn to recognize the many varieties, including trillium, Jack-in-the-pulpit and others and hear about their past uses in folk medicine and other lore. Outdoor program, Ages 8 - 15.



TUESDAY, JUNE 5: SPIDERS ARE SUPER! **NEW!!**

Eastern Michigan professor and local spider expert Cara Shillington will join us to share her knowledge and general fascination with all things arachnid! She will bring some of her own live specimens, and lead us on a hunt in search of some of our resident eight-legged natives! Half indoors and half outdoors, Ages 8 - 15.



WEDNESDAY, JUNE 13: FIELD NATURALIST/ZOOLOGY **NEW!!**



It is surprising how much wildlife still lives in our urban area. Naturalists have seen mink, fox, coyote, deer, owls, and even signs of beaver in our nature preserve. Explore the wildlife of Holliday Nature Preserve in this program. We will search for tracks and other signs of animal activity and hopefully, if we're stealthy enough, spot some of the local critter residents along Tonquish Creek. Outdoors, Ages 10 - 15.

THURSDAY, JUNE 21: RAISING BUTTERFLIES AND THEIR FAVORITE FOOD PLANTS



We will learn to recognize many of Michigan's beautiful butterflies and find out how to attract them to our yards by planting their favorite caterpillar food and nectar plants! We will learn about the life stages of butterflies and students will be shown how to raise a butterfly to take home if they wish. Visit our Butterfly Garden, planted by the Southeast Michigan Butterfly Association volunteers! Indoors and outdoors, Ages 8 - 12.

TUESDAY, SEPTEMBER 11: BIRDS OF PREY, 1:30 - 2:30 PM **NEW!!**

Always fascinating and majestic, the birds of prey include hawks, owls, falcons and eagles. Learn about their natural history and get a close-up look at live birds! A presenter from Raisin River Raptors will join us to share her knowledge and her birds with us! Indoor program, Ages 4 - Adult.



WEDNESDAY, SEPTEMBER 19: FIELD NATURALIST/BOTANY **NEW!!**

With field book in hand we will explore the plants of Holliday Nature Preserve, making notes on how to identify them, and for the artists in the group, drawing them, just as naturalist John Muir did on his walk from Indiana to Florida. Outdoor program, Ages 10 - 15.

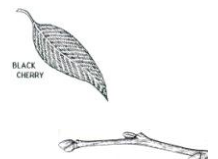


THURSDAY, SEPTEMBER 27: FERN FOLLIES **NEW!!**

Ferns are an ancient plant. We are fortunate to have many species of beautiful, lacy ferns growing in our Holliday Nature Preserve. We will create a fern craft and then go out on a hike to discover many of the local species. Half indoors and half outdoors, Ages 10 - 15.

TUESDAY, OCTOBER 9: TREE KEYING

Observing plant characteristics, such as leaves, fruit, twigs and bark, students will identify many of our native Michigan trees in this fun hands-on activity! A simple key will help to solve the mysteries! Indoors, Ages 9 - 15.





WEDNESDAY, OCTOBER 17: PREDATOR/PREY RELATIONSHIPS **NEW!!**

The interaction of predator and prey animals is a key concept in the natural balance of habitats. We will understand how this works as we play games and explore the amazing way that nature keeps it all in check. Indoors and outdoors, Ages 7 – 12.

THURSDAY, OCTOBER 25: LEAF PRINT T-SHIRTS & NATURE HIKE

Trees will be the focus of our explorations as we take a hike to learn how to identify our local floodplain species. Each student should bring a light-colored T-shirt to make leaf prints as a memory of the beautiful fall season. Indoors and outdoors, Ages 4 – 12.

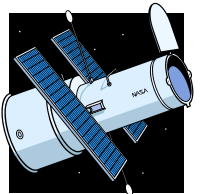


TUESDAY, NOVEMBER 6: NATIVE AMERICANS OF THE GREAT LAKES

Michigan has a rich Native American cultural history. Learn about the Three Fires tribes from our area, the Potawatomi, Odawa, and Ojibwa and how they lived with nature in the past. Students will make a native craft to take home. Indoors, Ages 7 – 15.

WEDNESDAY, NOVEMBER 14: HUBBLE SPACE TELESCOPE **NEW!!**

Learn about this amazing telescope and all of the discoveries that have been made about the cosmos since it went into orbit around the Earth in 1990! From black holes, supernovas, nebulas, galaxies, dwarf planets, exoplanets, quasars, gamma ray bursts, dark matter and dark energy, the Hubble has opened our eyes to the incredible wonders of the Universe! Students will make a model of the Hubble to take home. Indoors, Ages 9 – 15.



THURSDAY, NOVEMBER 29: NATURE'S RECYCLING PLAN **NEW!!**

Many people try to recycle glass, metal, paper and cardboard at home. Nature has been recycling forever! We will hike to look for signs of natural recycling and then make our own paper from recycled materials in the classroom. Indoor and outdoor program, Ages 7 – 10.



TUESDAY, DECEMBER 4: MICHIGAN GEOLOGY

Discover Michigan's amazing geological history, which includes volcanoes, mountains, oceans and glaciers! We will take a look at the "big" picture, including plate tectonics. Then we will explore the "smaller" picture by learning rock and mineral classification. Students will do mineral testing and make a mineral collection to take home. Indoors, Ages 8 – 15.

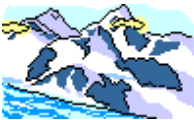
WEDNESDAY, DECEMBER 12: ADVANCED GEOLOGY/HYDROLOGY **NEW!!**

Learn from someone in the field of geology as we invite a special visitor to share his knowledge. Topics covered will include careers in geology, the hydrological cycle, water well drilling operations, underground storage tanks and their impact on groundwater, as well as rocks, minerals and fossils. Indoors, Ages 10 – 15.



THURSDAY, DECEMBER 20: SNOW CONES & GLACIERS **NEW!!**

The large mammals of the Ice Age are gone, but their fossils remain as evidence of their past existence. We will excavate "ice age mammals" from ice and celebrate Michigan's frozen past with a snow cone while we watch a slide show (talk about prehistoric!) which will bring these remarkable animals like mammoths and mastodons to life. Indoor program, Ages 7 – 12.



Nankin Mills Interpretive Center 2012 Home School Registration Form

Class Time - 1:30 pm - 3:00 pm, unless another time is indicated, One adult per each group of children is required

Date	Program Title	#Child	#Adults
Wednesday, January 18	Snow Snakes NEW!! (Dress for weather)		
Thursday, January 26	Astronomy: Our Solar System (Bring a T-shirt)		
Tuesday, February 7	Underground Railroad History		
Wednesday, February 15	Mining and Pasties NEW!!		
Thursday, February 23	Animal Keying: Skins, Tracks & Skulls		
Tuesday, March 6	Michigan's Logging History NEW!!		
Wednesday, March 14	Maple Sugaring OFFSITE, MEET AT CASS BENTON PARK, (Dress for outdoors!)		
Thursday, March 22	Nature Jeopardy & Concentration, History Scavenger Hunt NEW!!		
Tuesday, April 10	Songs & Stories: Kitty Donohue, 1:30 – 2:30 pm NEW!!		
Wednesday, April 18	Live Reptiles & Amphibians of Michigan		
Thursday, April 26	Owls of Michigan & Owl Pellets		
Tuesday, May 8	An Evening with Frogs! 6:30 – 8:00 pm, NEW!! CARPOOLING OFFSITE, START AT NANKIN		
Wednesday, May 16	Pond Life (Dress for mud!)		
Thursday, May 24	Wildflower Folklore Hike NEW!! OFFSITE, MEET AT COWAN, (Dress for hike)		
Tuesday, June 5	Spiders are Super! NEW!! (Dress for hike)		
Wednesday, June 13	Field Naturalist/Zoology NEW!! (Dress for hike)		
Thursday, June 21	Raising Butterflies & Their Favorite Food Plants		
Tuesday, September 11	Birds of Prey: Raisin River Raptors 1:30 – 2:30 PM, NEW!!		
Wednesday, September 19	Field Naturalist/Botany NEW!! (Dress for hike)		
Thursday, September 27	Fern Follies NEW!! (Dress for hike)		
Tuesday, October 9	Tree Keying		
Wednesday, October 17	Predator/Prey Relationships NEW!!		
Thursday, October 25	Leaf Print T-shirts & Hike (Bring a T-shirt, Dress for hike)		
Tuesday, November 6	Native Americans of the Great Lakes		
Wednesday, November 14	Hubble Space Telescope NEW!!		
Thursday, November 29	Nature's Recycling Plan NEW!! (Dress for hike)		
Tuesday, December 4	Michigan Geology		
Wednesday, December 12	Advanced Geology/Hydrology NEW!!		
Thursday, December 20	Snow Cones & Glaciers NEW!!		
TOTAL # Child/Adult			
X Fee Wayne Co.resident	Multiply # children and # adults in line above by fee	X \$6.00	X \$2.00
Or X Fee Non Co. resident	Multiply # children above and #adults by out of Wayne County fee	X \$7.00	X \$3.00
Total Fees due child/adult			

Add your fees for child and adult columns and submit check payable to "Wayne County Parks" with this form to the Park Office: 33175 Ann Arbor Trail, Westland, Michigan 48185. To pay by credit card, call 734-261-1990. Keep a copy of the registration form for yourself. No Refunds or Credits will be given unless Wayne County cancels a Program.

Name: _____

Address: _____ City _____ Zip _____ Phone _____

Total Payment \$ _____ Cash ___ Ck# _____ Chrg# _____ (last 4 digits)

