

WAYNE COUNTY PARKS

Nankin Mills Interpretive Center

33175 Ann Arbor Trail, Westland, Michigan 48185



Robert A. Ficano
County Executive

Field Trip and Outreach Programs for Schools or Organized Groups



Nankin Mills Interpretive Center offers Public Programs for families, Scout Badge Workshops and seasonal Field Trips and Outreach Programs for schools, home school students and other organized groups. The Interpretive Center and interpretive programs are designed to enhance understanding of the natural and cultural history of the Rouge River watershed in fun and informative ways, using hands-on activities, games, hikes and crafts. This brochure lists topics available to schools and other organized groups, either as a Field Trip or Visiting Naturalist Outreach program. We can also provide programs on other topics at your request. Please note the recommended grade levels for each program.

- **FIELD TRIP PROGRAMS** are 1 - 2 hours long, but can be adjusted to meet your needs. The Center can accommodate two to three classes at a time.
- **OUTREACH PROGRAMS** are 1 – 1 ½ hours long, and feature a Naturalist visiting your school or site. Please note that some of our programs are not available as an Outreach.
- **PROGRAM FEE: \$6.00 per student, \$2.00 per adult.** Special speaking fee rates may apply for libraries and other organizations. No charge for parents and teachers attending school field trips. You may tour the museum on your own for free. Cash, credit card or check accepted, made payable to “Wayne County Parks” and due the day of the program.
- **CALL 734-261-1850 with any questions or to schedule a program.**

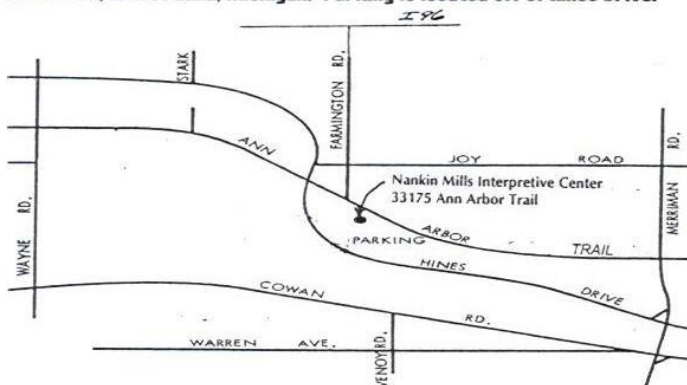
Discover four historic eras



as the Rouge River Flows Through Time

The mission of Nankin Mills Interpretive Center is to foster awareness and appreciation of the natural and cultural resources of the Rouge River watershed through exhibits and interpretive programming as a means of promoting stewardship of these resources.

Nankin Mills Interpretive Center is located on Hines Drive, just east of Ann Arbor Trail, in Westland, Michigan. Parking is located off of Hines Drive.



Exhibits and Programs

Made possible by the

1996 and 2001 millage for

Wayne County Parks and

Rouge Program Office

Ford Motor Company

Friends of Nankin Mills

Sheldon Road Visteon UAW Local 845

Employees

Gregory Eaton of Metrocars

HISTORY OF THE ROUGE RIVER ~ GUIDED MUSEUM TOUR

Offered Year-Round, Field Trip Only, Recommended Grades 2nd – Adult

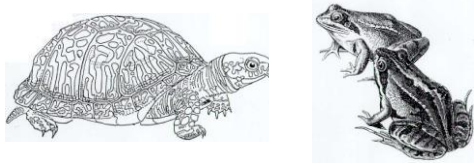
Our interpretive center exhibits focus on the key role the Rouge River has played in the natural and cultural history of our area, drawing people and wildlife to its banks. Four historic time periods are featured: Natural History, Native Americans/The First People, Grist Mill/Settlement Times and Henry Ford's Village Industries from 1918 – 1948. From the Potawatomi village to the amazing likeness of Henry Ford, the center offers much to be discovered about our early Michigan history.

FALL FROLIC

Offered September, October, November

Field Trip or Outreach, Grades Preschool – 6th

Trees are the focus of our fall explorations as we learn why leaves are changing colors and discover what “deciduous” means. As we hike to enjoy this beautiful season, we will learn to identify several of Michigan's trees. Students will make either leaf collections or leaf print T-shirts as a memory of the season. Each student should bring a light colored T-shirt if you choose to make leaf prints.



REPTILE ~ AMPHIBIAN ENCOUNTERS!

Offered September, October and April, May, June as an Outreach

Offered Year-Round as a Field Trip, Grades Preschool – 8th

The Rouge River floodplain is the home of many reptile and amphibian species, together known as “herps”. Meet live frogs, turtles, snakes, toads and salamanders,

and discover their adaptations to their wetland habitats. The natural history of these fascinating animals will be explored as you enjoy your “up-close encounter” with our live animals.

HABITAT HIKE

Offered September, October and April, May, June

Field Trip Only, Grades 3rd – 6th

An outdoor hike through the Holliday Nature Preserve will allow us to experience a variety of habitats: open field, edge habitat, river floodplain, upland forest and swamp! Along the way, we will learn how plants and animals from each habitat adapt to the unique living conditions. Fun games help students learn the concepts of food webs, niches and carrying capacity.



INSECT ADVENTURES

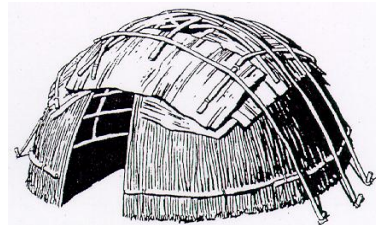
Offered September and April, May, June, Field Trip or Outreach, Grades Preschool – 4th

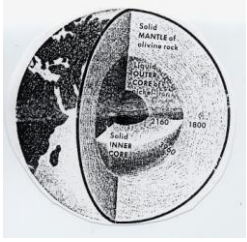
How many legs do they have? What do they do with their antennae and weird mouths? Puppets, games and chasing bugs are all part of the fun as we explore the world of insects. Older students will learn about complete and incomplete metamorphosis, life stages of insects and other amazing natural history!

NATIVE AMERICANS OF THE GREAT LAKES: A CULTURAL HISTORY

Offered November through March, Field Trip or Outreach, Grades 2nd – 6th

Our area has a rich Native American cultural history. Take a journey back in time to explore how the first people from our area lived with the land. A tour of our Native American exhibits introduces the early life of the local Potawatomi and their Three Fires brotherhood with the Odawa and Ojibwa. Through hands-on games, activities and discussion, we begin to appreciate the knowledge required to live from the natural resources at hand, and also realize that native culture is very much a part of our lives today.





MICHIGAN GEOLOGY

Offered November through March, Field Trip or Outreach, Grades 3rd – 8th

Michigan has a fascinating geological history, including mountain ranges, volcanoes, oceans and glaciers. Discover the evidence we have today that confirms this past. We will look at the “big picture”, how the theory of plate tectonics influences mountain formation, volcanoes and earthquakes. We will also explore the “smaller” world of geology, rock and mineral classification. Students will participate in hands-on hardness testing and other mineral classification techniques and create a rock collection to take home.

OWLS OF MICHIGAN

Offered November through March, Field Trip or Outreach, Grades 1st – 6th

Eleven different species of owls are found in Michigan. Three are common, four are rare, and four others visit from the north when their food supplies are low. We will learn about these interesting nocturnal birds and discover their amazing adaptations which enable them to be such effective night hunters. Students will be given owl “pellets” to examine and discover what the owls have been eating!



ALL THINGS MICHIGAN

Offered November through March, Field Trip Only, Grades 3rd – 6th

A guided scavenger hunt through the museum will highlight Michigan’s diverse history, including early native cultures, French fur trading in the 1600s, British influences of the 1700s, American colonial settlement in the 1800s, and the early industrial revolution of the 1900s. Guessing games will introduce students to our state symbols, products from Michigan, and other fun facts about our great state. Students receive a “Michigan History” booklet to take home.



BEGINNING ASTRONOMY

Offered December through March, Field Trip or Outreach, Grades 3rd – 6th

Explore the wonders of the Universe with us as we discover stars, planets, comets, meteoroids, meteors, meteorites and asteroids! We will learn how to find constellations in the night sky using the Big Dipper and Orion “guideposts”, learn fun planet facts and act out some of the early Greek, Roman and Native American mythology about the stars. Each student should bring a clean, empty cardboard oatmeal can for creating their own celestial wonders.

ANIMALS IN WINTER: TRICKY TRACKS

Offered December through March, Field Trip or Outreach, Grades Preschool – 6th

Don’t hibernate! Winter offers so many exciting opportunities to explore our natural world.

We will unravel the mysteries of animal tracks and create our own “tracked up” T-shirts, and also discover how animals survive the winter. Each student should bring a light-colored T-shirt, and dress for the weather, since a hike will be part of the fun, unless it’s really blustery!



HENRY FORD'S VILLAGE INDUSTRY

Offered December through March, Field Trip Only, Grades 3rd – 8th

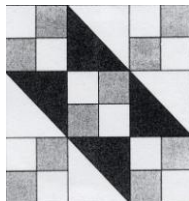
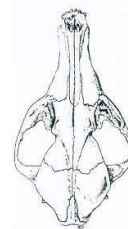
You may be surprised to discover that Nankin Mills played a role in Michigan’s early automotive history. Slides, a museum tour, and a fun game show quiz competition help students learn about Henry Ford’s Village Industry at Nankin Mills. Ford manufactured screws, and later stencils, dies and engravings here. Thomas Edison assisted Ford with his operations at Nankin, utilizing the Rouge’s waterpower to create electricity. Exciting electrical experiments will help students explore how waterpower becomes electrical power, and they will make their own “engraving” to take home.

Please turn page for more programs

ANIMAL MYSTERIES

Offered December through March, Field Trip or Outreach, Grades 2nd – 6th

Bring your detective skills and unravel the clues animals leave behind. Tracks, scat, skulls and animal skins are all part of the fun! Students will learn to recognize animal signs and discover techniques for identifying skulls in this informative program.



UNDERGROUND RAILROAD HISTORY

Offered December through March, Field Trip or Outreach, Grades 2nd – 6th

The Rouge River played an important role as a local route for people to follow while escaping slavery on the “Flight to Freedom” from the south to Detroit and on to Canada. The folk history of Nankin Mills includes rumors that it was part of the Underground Railroad system in this area. Learn the history of our local abolitionists, and discover the quilt codes and songs used in secret communications. Students will create their own “quilt codes”.

MAPLE SUGARING

Offered March, Field Trip only, Grades Kindergarten – 6th

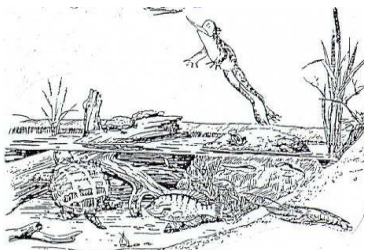
Bundle up and join our naturalist at Cass Benton Park in Northville to learn how a tree is tapped and maple sap is collected and boiled into delicious maple syrup. We will also learn how the early Native Americans collected sap. The unique combination of warm spring days and freezing nights in the northeastern U.S. and Canada creates the conditions needed for sugaring. The season is short, from February through March. We will warm up around the evaporating pan and take our first taste of spring! Dress for the weather, program is outdoors.



THE ROUGE RIVER WATERSHED

Offered April, May, June, Field Trip or Outreach, Grades 3rd – 8th

This program is designed to foster a basic understanding the integral role water plays in our lives and how we can protect our water resources, as well as familiarize students with our local Rouge River watershed. Follow a raindrop on its journey through the water cycle, meet live animals that depend on floodplain habitats for survival, and learn how the choices we make affect our Rouge River water quality. We will also hike and explore the floodplain of the Rouge River.



BIRD ADAPTATIONS

Offered April, May, June, Field Trip Only, Grades 2nd – 6th

Different beaks and feet, how do they fly? Learn about adaptations, which help birds survive in their unique habitats and allow them the freedom of flight. Discover the amazing ways birds build their nests, migrate and many other incredible bird facts! You may get a chance to see new hatchlings in our nesting boxes!

A bird hike with binoculars is part of the fun, weather permitting.



POND LIFE

Offered April, May, June, Field Trip only, Grades 2nd – 6th

Our pond may be small, but it is filled with aquatic life! Do you know how many different creatures live in a pond? You'll find out when you catch some yourselves and play “Pond Bingo”! Get a closer look at the tiny pond dwellers moving under our video microscope. Older students will learn how these different macro invertebrates serve as indicators of water quality. You will also meet our live turtles, snakes and frogs!

